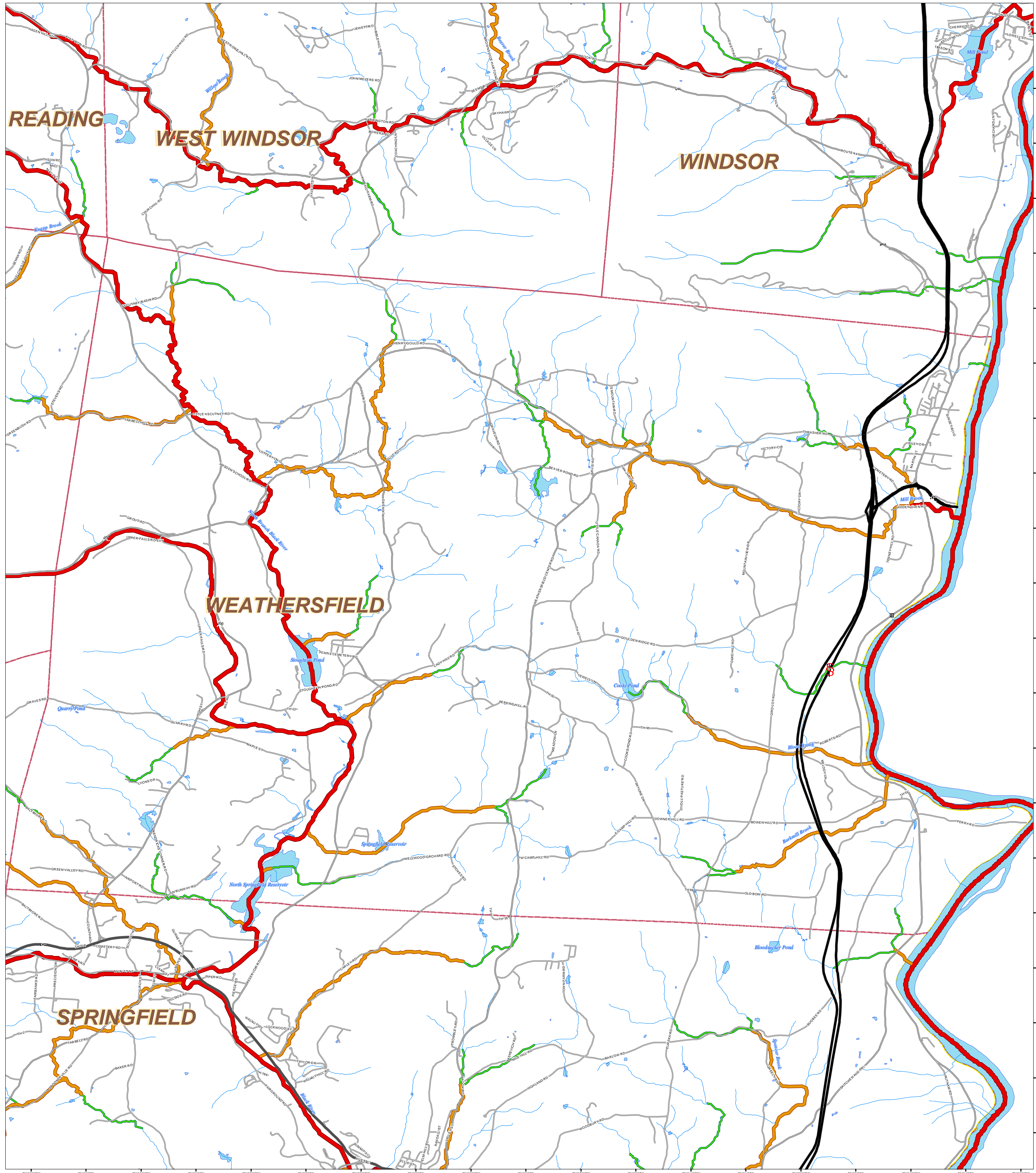


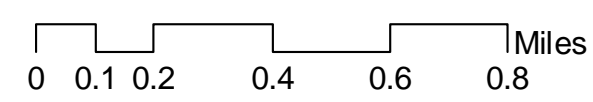
Watershed Sizes Used as Guidance in Stream Alteration Regulations

WEATHERSFIELD



Map Disclaimer

This map represents guidance on watershed sizes using data and methods that have a certain amount of error associated with them. The accuracy of watershed sizing maps using the Vermont Hydrography Data Set and produced with computer automated methods may be exceeded by other methods using more accurate data. The regulated public may request River Management Program (RMP) approval, or the RMP may decide, to use watershed sizes based on more accurate methods and data.



Map Description

This map product indicates the reaches of stream and river in a given town that would be at or below the 0.5, 1.0, and 10.0 square mile watershed thresholds used for jurisdictional determinations under the Vermont ANR Stream Alteration Regulatory Program.

RMP contacts and information about the Stream Alteration GP may be obtained at: http://www.anr.state.vt.us/dec/waterq/rivers/htm/rv_management.htm

Map Created by Erik Engstrom, ANR GIS, April 1st, 2011.

LEGEND

- | | | |
|--------------------|--------------------------------|--------------------|
| Road | Drainage Area >10 Square Miles | VT Town Boundaries |
| Principal Arterial | 1 - 10 Square Miles | VT County Boundary |
| Minor Arterial | 5 - 1 Square Mile | |
| Urban | <5 Square Mile | |
| Rural | Lake/Pond | |
| Local | | |

