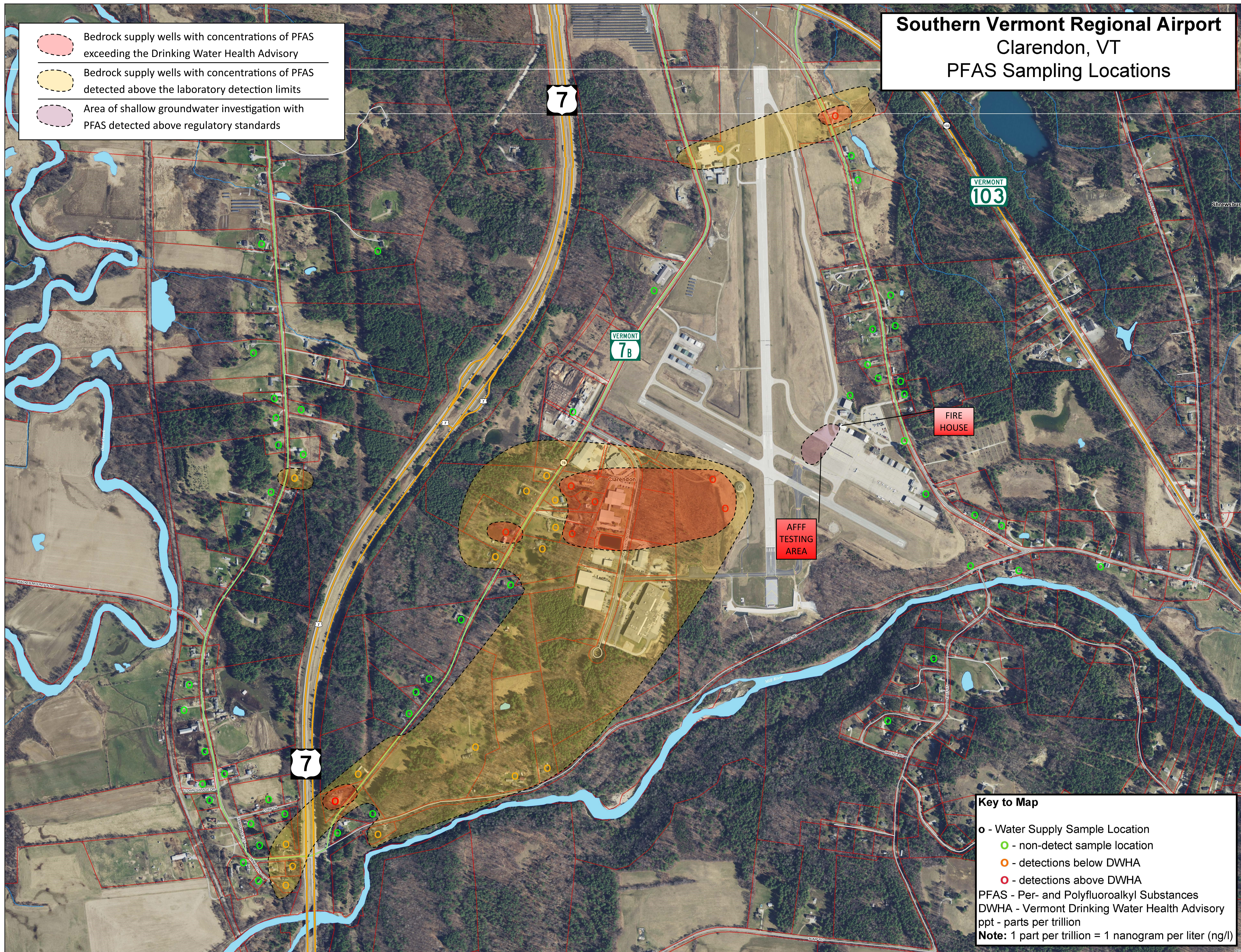


Southern Vermont Regional Airport Clarendon, VT PFAS Sampling Locations

- Bedrock supply wells with concentrations of PFAS exceeding the Drinking Water Health Advisory
- Bedrock supply wells with concentrations of PFAS detected above the laboratory detection limits
- Area of shallow groundwater investigation with PFAS detected above regulatory standards



Key to Map

- o - Water Supply Sample Location
- - non-detect sample location
- - detections below DWHA
- - detections above DWHA

PFAS - Per- and Polyfluoroalkyl Substances
DWHA - Vermont Drinking Water Health Advisory
ppt - parts per trillion
Note: 1 part per trillion = 1 nanogram per liter (ng/l)