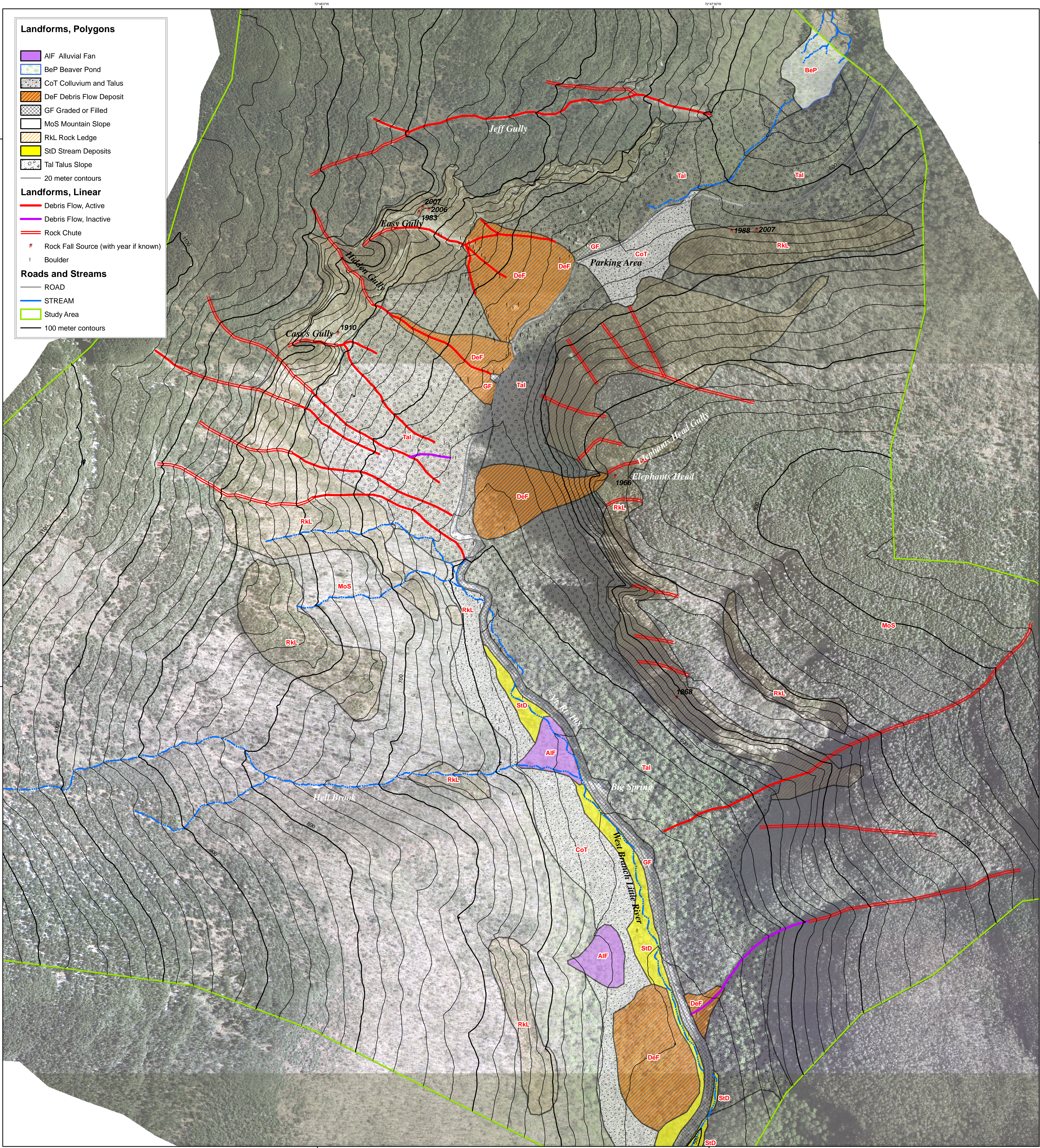


Aerial photograph taken in 1962 and approximately georeferenced. Road and streams are from photogrammetry by James W. Sewall Co. in 2007. Map produced for Vermont Geological Survey by Norwich University Geology and Environmental Science Department. Cartography by George Springston, March 25, 2008.

1962 Aerial Photo of Smugglers Notch  
Cambridge, Vermont  
George Springston

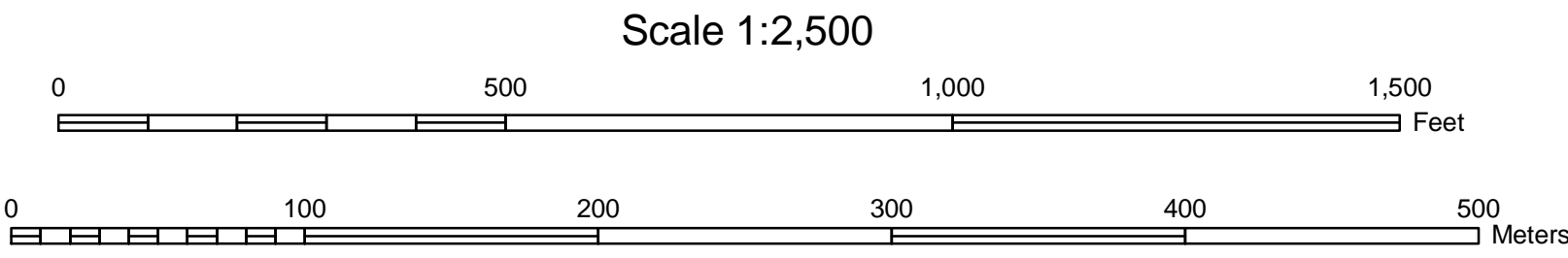






Orthophoto base produced by James W. Sewall Co. from aerial photos taken in May, 2007. Map produced for Vermont Geological Survey by Norwich University Geology and Environmental Science Department. Cartography by George Springston, June 4, 2009.

Contour interval 20 meters.



**Landform Map of Smugglers Notch**  
**Cambridge, Vermont**  
George Springston





