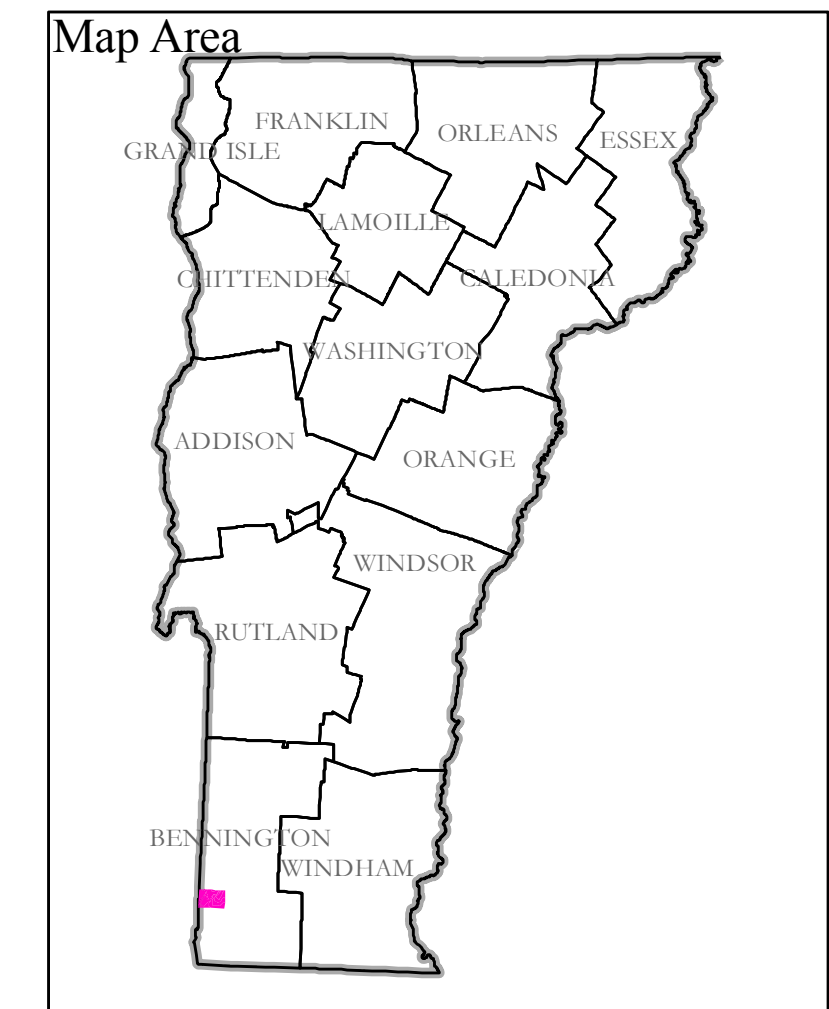
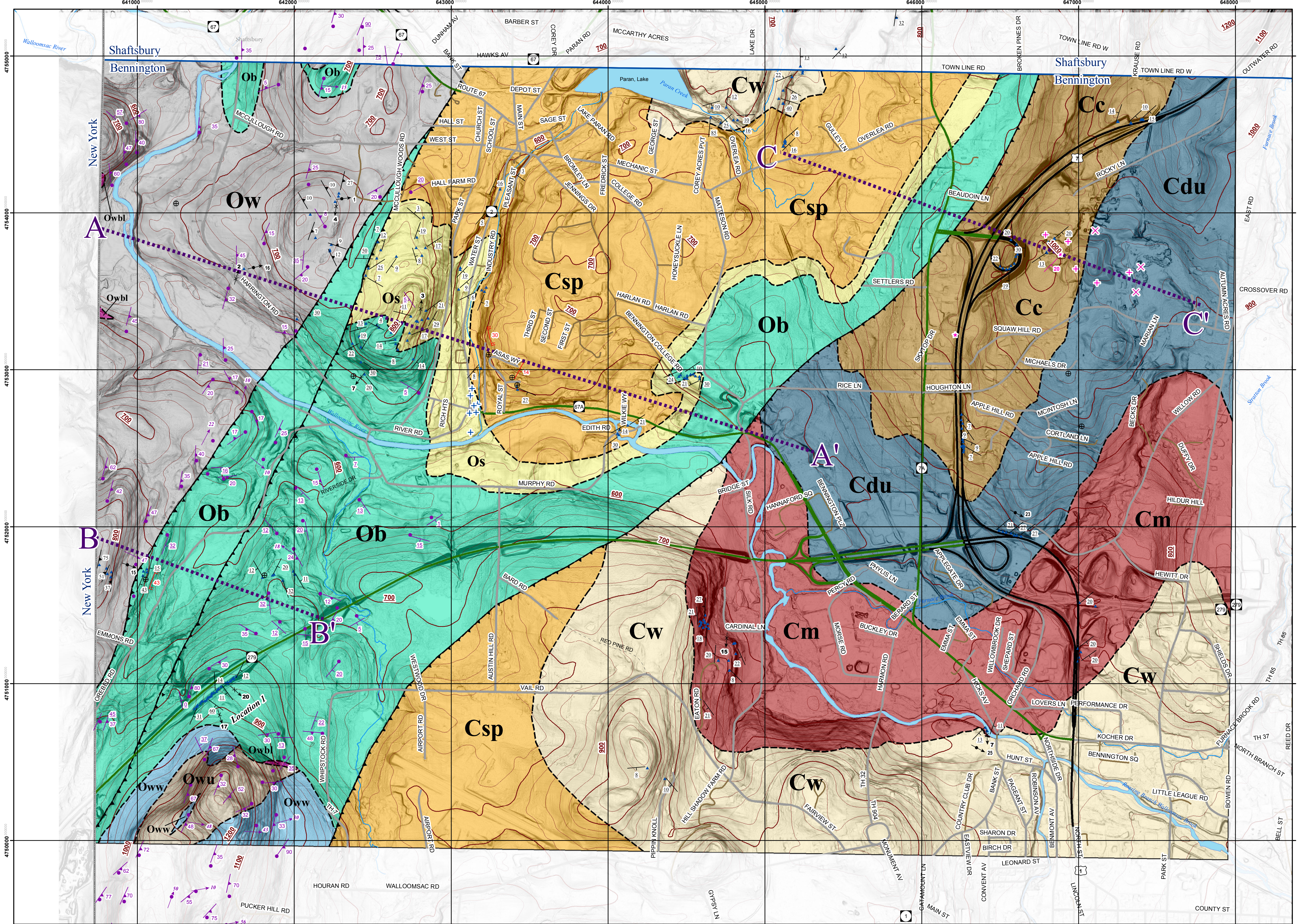
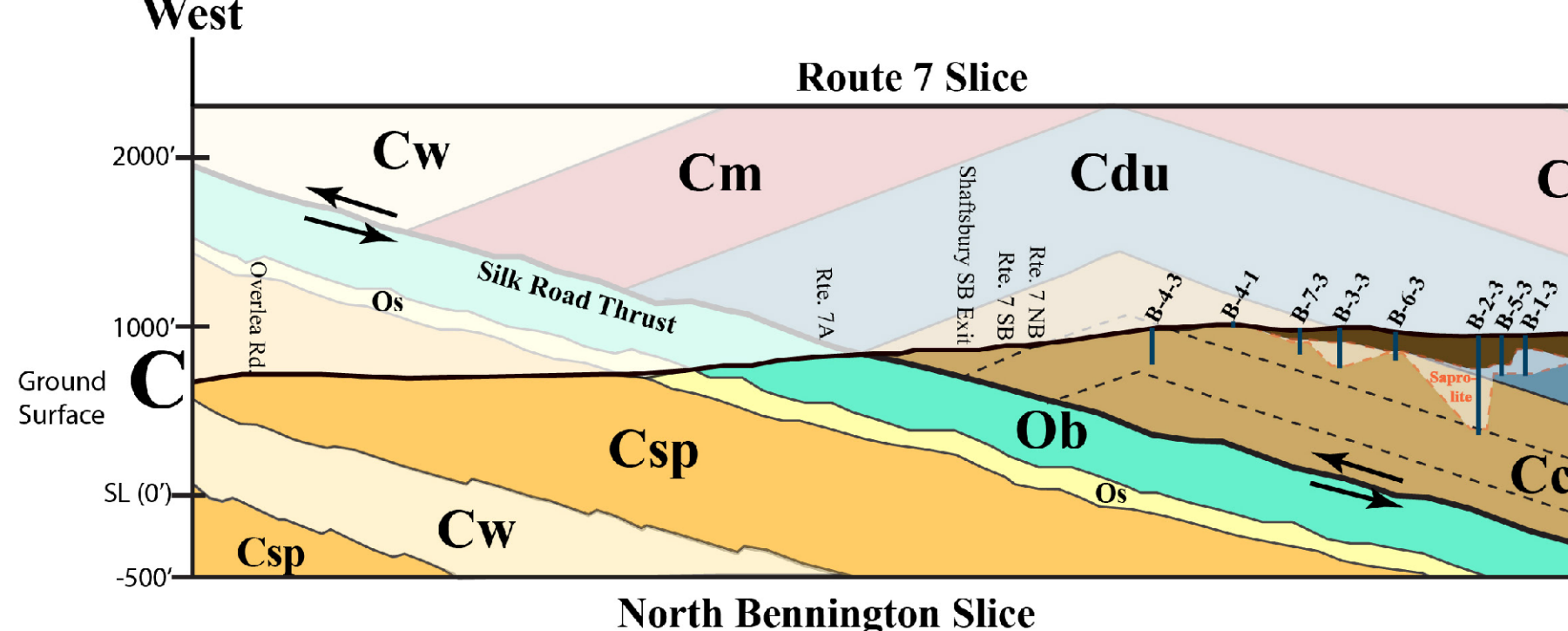
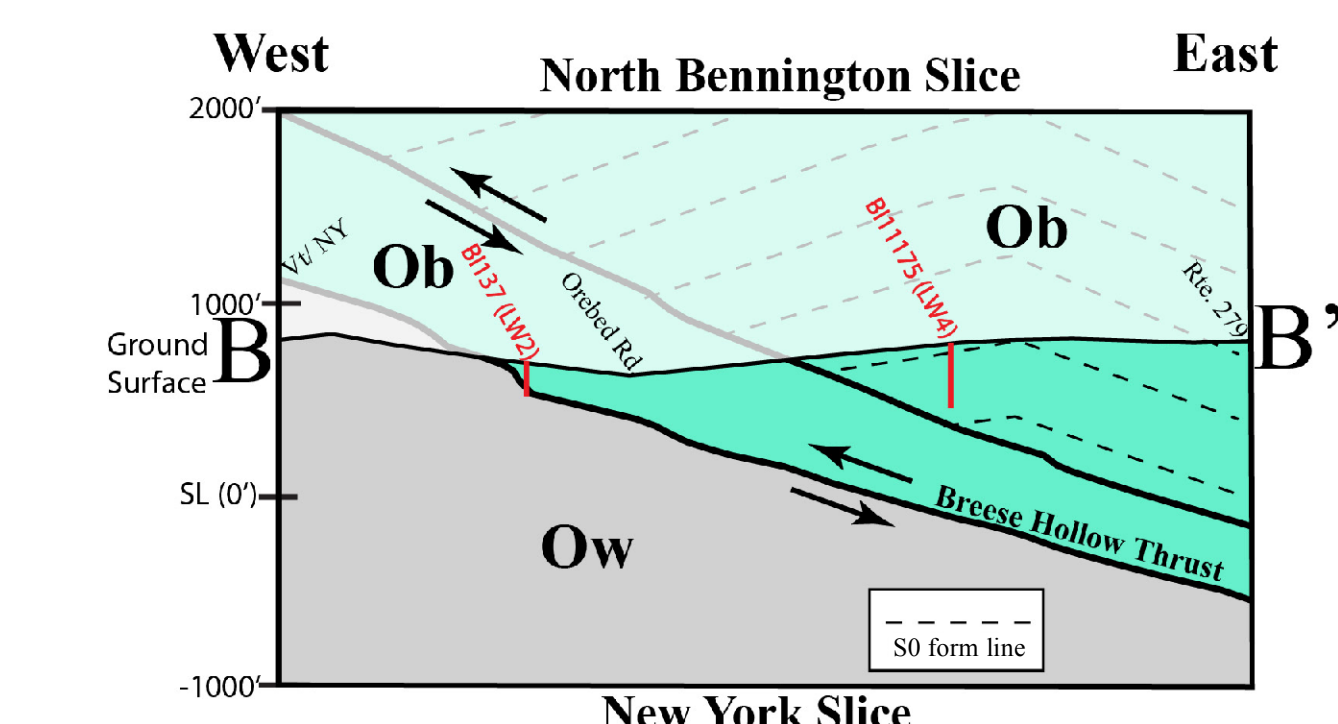
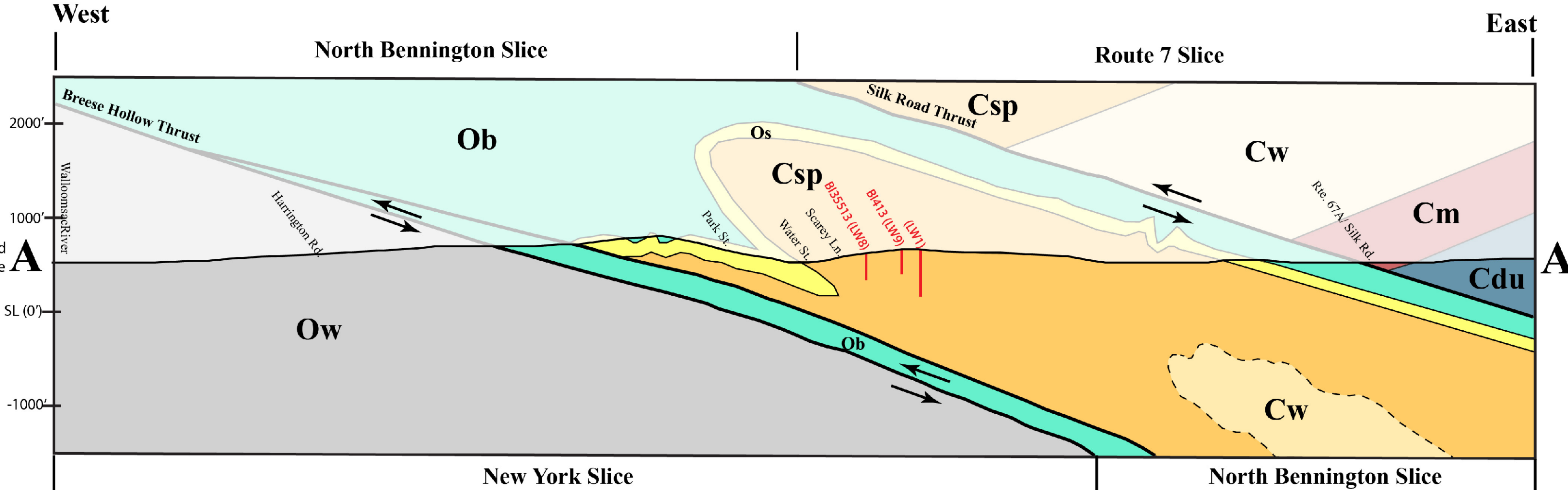


DRAFT

DRAFT



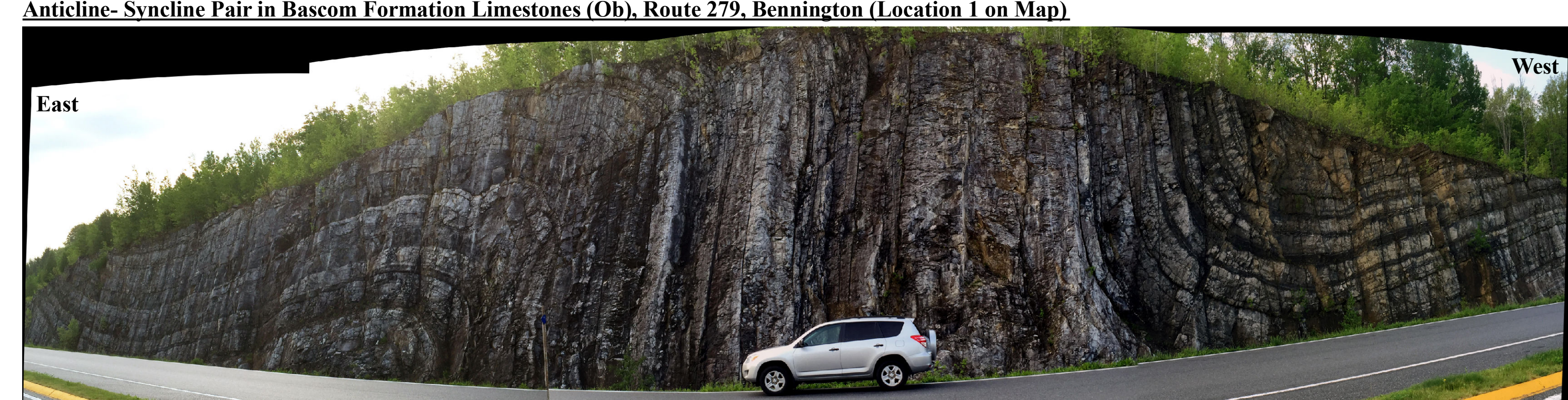
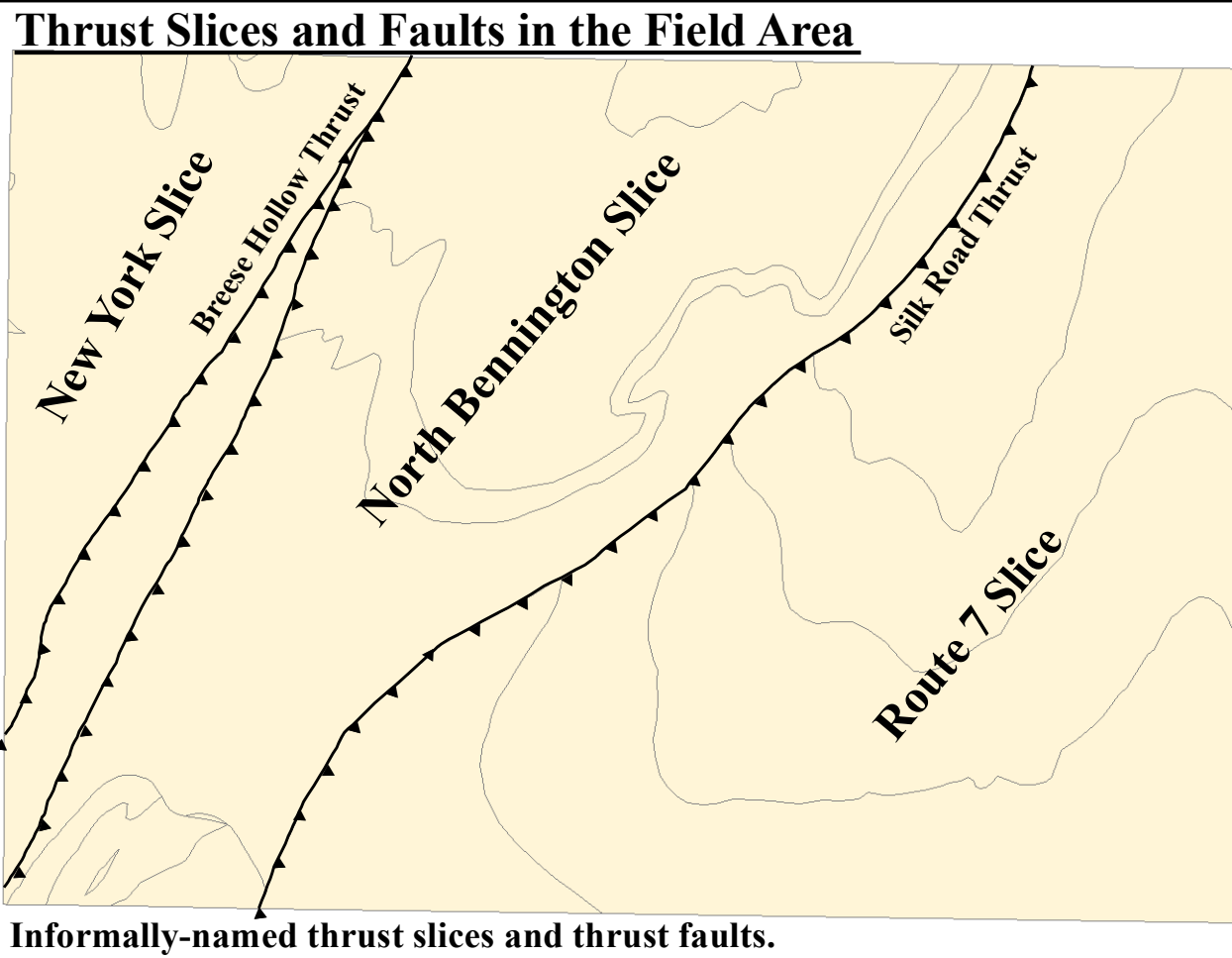
# Preliminary Bedrock Geologic Map of the Bennington Area, Vermont Author: Jonathan Kim- Vermont Geological Survey



Legend for the cross-sections:

- Saprolite (Decomposed Bedrock) Horizons (approximated from McLaren-Hart (1997) well data)
- Overburden, undifferentiated (fill, sand, gravel, silt, clay, anthropogenic deposits)/approximated from McLaren-Hart (1997) well data
- McLaren-Hart (1997) Well or Boring (approximated from Plate 1)
- 50 foot lines

Note: In order to show context for the saprolite, which represents decomposed bedrock, according to McLaren-Hart (1997), overburden is shown in the east side of this cross-section.



## Description of Map Units

Ordovician	
Ow	Walloomsac Formation Undifferentiated: rusty-weathering, dark gray to black, locally graphitic, phyllite with cubic pyrite molds. May contain thin limestone beds.
Oww	Whipstock Breccia Member: argillaceous breccia containing clasts of Taconic and Vermont Valley sequences (Potter, 1971).
Owu	Fine-grained quartzose phyllite, phyllitic siltstone, and radiolarian chert horizons in the Whipstock Breccia (Potter, 1971).
Owb	Black slate with graptolites and gray to blue chert member (Potter, 1971).
Ob	Bascom Formation Thinly-bedded gray limestone with tan-weathering dolomitic and/or black shaly layers.
Os	Shelburne Formation Bone-white weathering; well-bedded; white, mottled, light gray, and gray, limestone and dolomitic limestone.
Cambrian	
Csp	Clarendon Springs Formation Tan to brown-weathering, poorly-bedded, gray, crystalline, dolostone and calcitic dolostone.
Cw	Winooski Formation Tan to brown-weathering, well-bedded, light-gray to white, limestone and dolostone.
Cm	Monkton Formation Pink to reddish brown-weathering, gray, well-bedded sandstone and dolomitic sandstone; tan-weathering, gray to white, well-bedded dolostone and dolomitic sandstone; rusty-weathering, sulfidic, gray, phyllitic quartzite and phyllite.
Cdu	Dunham Formation Tan-weathering, well-bedded, gray, dolomitic quartzite with rounded detrital quartz grains; dark gray, well-bedded dolostone; rusty-weathering, gray, sulfidic, phyllitic quartzites and phyllites.
Cc	Cheshire Formation Rusty-weathering, well-bedded, gray, granular, non-calcareous, sandstone with rounded gray detrital quartz grains.

## Description of Map Symbols

Structure Symbols	Location Symbols
Bedding (S0)- This Study	Field Stations (outcrops), This Study
Cleavage (S1)- Phyllitic/Slaty, This Study	Field Stations (outcrops), Selected from Potter (1971)
Lineation (L1)- Stretching, This Study	Bedrock Outcrop (location approximated from Plate 1, McLaren-Hart, 1997)
Lineation (L2)- Intersection, This Study (proxy for F2 fold axis)	Bedrock Boring (location approximated from Plate 1, McLaren-Hart, 1997)
Bedding- Acoustic Televiwer/ Caliper Logs (calculated)	Surficial Boring with Thick Saprolite (>40") (location approximated from Plate 1, McLaren-Hart, 1997)
Fault/Fracture Zone- Acoustic Televiwer/ Caliper Logs (calculated)	Wells with Geophysical Logs (Kim+Romanowicz, 2016, unpublished data)
Bedding (Potter, 1971)	Bedrock Boring (C.T. Male, 2016, unpublished data)
Cleavage- Slaty (Potter 1971)	
Lineation- All Types (excluding slickensides) (Potter, 1971)	
Bedding- approximate (McLaren-Hart, 1997)	
	<b>Map Lines</b>
	Lithologic Contact- Approximate
	Thrust Fault (teeth on hanging wall)- Approximate

## Stratigraphic Column

