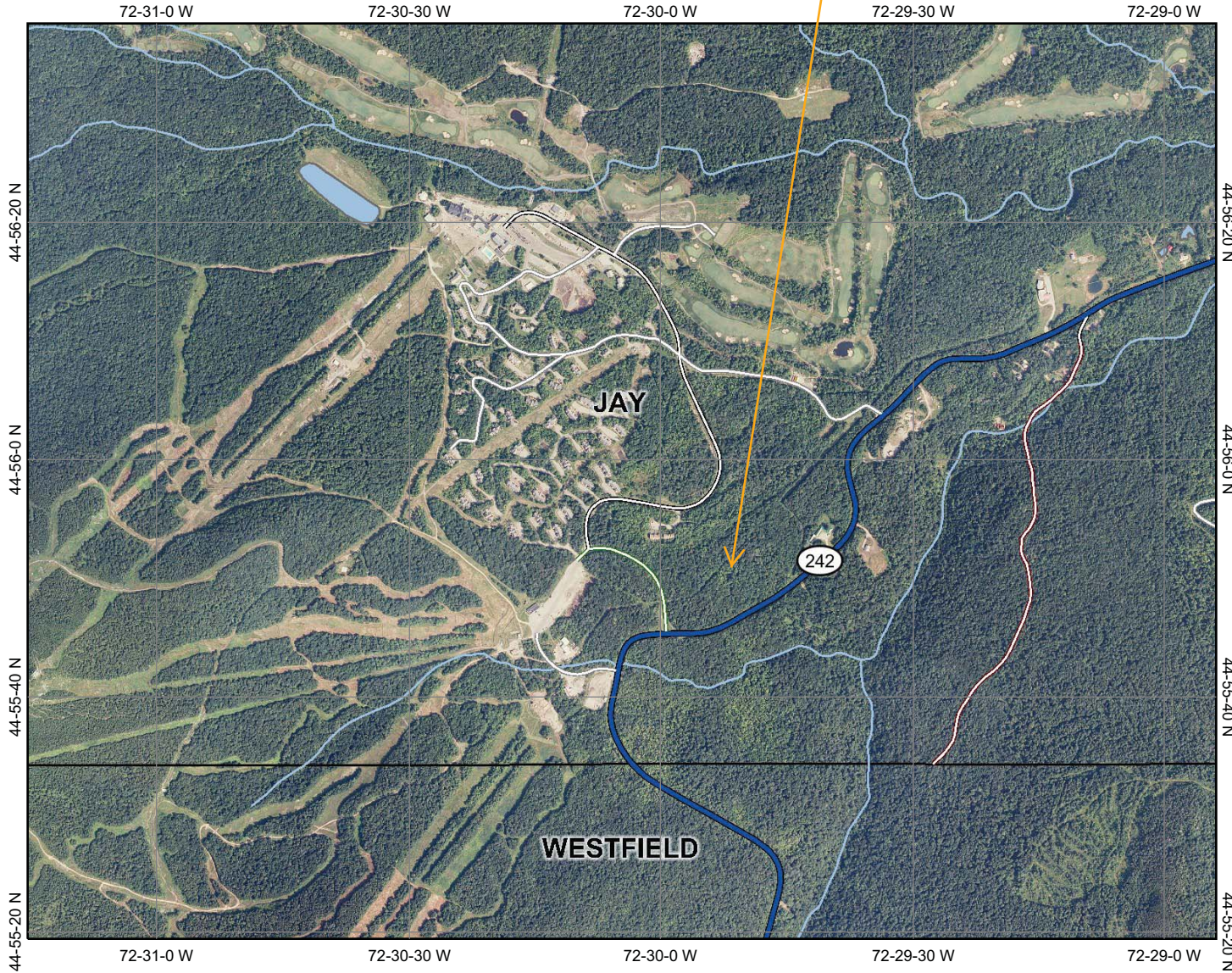




ANR Environmental Interest Locator

Vermont Agency of Natural Resources (ANR)

Location of Stateside Cottages Project



Legend

- Roads**
- US Highway
 - Vermont State Highway
 - Class One
 - Class Two
 - Legal Trail
 - Emergency U-Turn Area
 - Proposed Class Two
 - Proposed Class Three
 - Proposed Vermont State Highway
 - Proposed US Highway
 - Proposed Interstate
 - Discontinued Interstate
 - Class Three
 - Class Four
 - State/National Forest Highway
 - Military Road (No Public Access)
 - Private Road
 - Hydrography Lakes and Ponds (VHD 5k)
 - Hydrography (VHD 5k)
 - VT County Boundary
 - VT Town Boundaries (No Fill)
 - NAIP Color Orthophotos 2009
 - VT State Boundary (Fill)

VT State Plane Meters (NAD83)



Scale: 1:16,713



Map center: 499899, 270294

DISCLAIMER: This map is for general reference only. Data layers that appear on this map may or may not be accurate, current, or otherwise reliable. VCGI and the State of Vermont make no representations of any kind, including but not limited to the warranties of merchantability or fitness for a particular use, nor are any such warranties to be implied with respect to the data on this map.

URL: http://maps.vermont.gov/imf/sites/ANR_NATRESViewer/jsp/launch.jsp