

GENERAL CONSTRUCTION SEQUENCE:

1. INSTALL BARRIER TAPE.
2. INSTALL CONSTRUCTION ENTRANCE AS SPECIFIED IN PHASE.
3. INSTALL SILT FENCE IN LOCATION SHOWN ON PLANS AS DETAILED.
4. STAKE OUT CONSTRUCTION, CLEAR AND GRUB.
5. STOCK PILE, PROCESS, AND DISPOSE OF TREES.
6. CONSTRUCT NECESSARY STABILIZED CONSTRUCTION ROADS. ESTABLISH DITCHLINES FROM DOWNHILL TO UPHILL. INSTALL CHECK DAMS AND EROSION CONTROL FABRIC IN DITCHLINES AS DETAILED. MAINTAIN TRAFFIC FLOW AS SHOWN.
7. CONSTRUCT SITE FEATURES.
8. VEGETATE AND STABILIZE AS NECESSARY WITHIN SEVEN DAYS.
9. RECEIVE APPROVAL FROM ON-SITE CO-ORDINATOR PRIOR TO MOVING TO NEXT PHASE. SEE DETAIL THIS PLAN SET.

SNOW MANAGEMENT:

TO ENSURE ADEQUATE STORAGE AND CONTROL OF MELTWATER, CLEARED SNOW MUST BE STOCKPILED DOWNSLOPE OF DISTURBED AREAS.

SNOW STOCKPILES MUST BE KEPT CLEAR OF STORMWATER TREATMENT STRUCTURES. DRAINAGE STRUCTURES SHOULD BE CHECKED REGULARLY AND KEPT FREE OF SNOW AND ICE DAMS.

EPSC PHASE NOTE:

THE SEQUENCE OF CONSTRUCTION FOR THE PHASES SHOWN IN THIS PLAN SET ARE TO FOLLOW THE 2014 PHASING SCHEDULE APPROVED AS A PART OF PERMIT # 5467-INDC. XX. COORDINATE WITH OSPC TO OBTAIN THE LATEST VERSION OF THE SCHEDULE.

THERE ARE MULTIPLE OTHER PROJECTS INCLUDED IN THE EPSC PERMIT THAT ALSO COVERS THIS PROJECT. THAT PERMIT CONTAINS THE EPSC SHEETS INCLUDED IN THIS PLAN SET, THE EPSC PLANS FOR THE OTHER PROJECTS AND THREE COVER SHEETS (2014-1-1, 2014-1-2 AND 2014-1-3) THAT SUMMARIZE ALL OF THE PROJECTS COVERED BY THE EPSC PERMIT AND CONTAIN VARIOUS PERMIT RELATED INFORMATION. THESE SHEETS DO NOT CONTAIN CONSTRUCTION RELATED INFORMATION, BUT CAN BE PROVIDED UPON REQUEST.

STABILIZATION REQUIREMENTS:

ALL AREAS OF DISTURBANCE MUST HAVE TEMPORARY OR FINAL STABILIZATION WITHIN SEVEN DAYS OF THE INITIAL DISTURBANCE. AFTER THIS TIME, ANY DISTURBANCE IN THE AREA MUST BE STABILIZED AT THE END OF EACH WORK DAY. THE FOLLOWING EXCEPTIONS APPLY:

1. STABILIZATION IS NOT REQUIRED IF WORK IS TO CONTINUE IN THE AREA WITHIN THE NEXT 24 HOURS AND THERE IS NO PRECIPITATION FORECAST FOR THE NEXT 24 HOURS.
2. STABILIZATION IS NOT REQUIRED IF THE WORK IS OCCURRING IN A SELF-CONTAINED EXCAVATION (I.E. NO OUTLET) WITH A DEPTH OF 2 FEET OR GREATER (E.G. HOUSE FOUNDATION EXCAVATION, UTILITY TRENCHES)

STABILIZATION IS TO BE ACCOMPLISHED IN ACCORDANCE WITH DETAILS SHOWN.

STORMWATER SYSTEM CONSTRUCTION SEQUENCE:

THE FOLLOWING ARE THE GENERAL STEPS FOR CONSTRUCTION OF THE STORMWATER TREATMENT SYSTEM. COORDINATE WITH OSPC ON DETAILED CONSTRUCTION PHASING. ALL GRADING AND COMPONENTS INSTALLATION TO BE COMPLETED WITHIN 1 MONTH ON COMMENCEMENT OF CONSTRUCTION. FULL VEGETATION AND SOIL STABILIZATION TO BE COMPLETED WITHIN 6 WEEKS.

1. INSTALL OUTFALL.
2. INSTALL CONVEYANCE TO OUTFALL.
3. COORDINATE WITH OSPC TO INSTALL OUTLET CONTROL STRUCTURES WITH INLET.
4. CONSTRUCT STORMWATER SYSTEM.

STORMWATER MAINTENANCE DURING CONSTRUCTION:

ONCE WATER IS DIRECTED THROUGH THE WATER QUALITY UNIT, THE SEDIMENT LEVELS IN THE UNIT ARE TO BE CHECKED AFTER STORM EVENT AND AT LEAST ONCE A MONTH BY THE CONTRACTOR. THE OSPC IS TO BE NOTIFIED OF THE STATUS OF THESE ACTIVITIES. IT IS THE RESPONSIBILITY OF THE CONTRACTOR TO REMOVE AND DISPOSE FOR SEDIMENT COLLECTED IN THE UNIT AS NEEDED TO AVOID SEDIMENT MIGRATING TO THE GRAVEL WETLAND UNTIL CONSTRUCTION IS COMPLETE AND THE SITE IS FULLY VEGETATED.

REQUIREMENTS FOR WINTER CONSTRUCTION:

THIS WINTER CONSTRUCTION EROSION PREVENTION AND SEDIMENT CONTROL PLAN MUST BE ADHERED FOR CONSTRUCTION BETWEEN OCTOBER 15 AND APRIL 15.

TO ENSURE COVER OF DISTURBED SOIL IN ADVANCE OF A MELT EVENT, AREAS OF DISTURBED SOIL MUST BE STABILIZED AT THE END OF EACH WORK DAY, WITH THE FOLLOWING EXCEPTIONS:

1. IF NO PRECIPITATION WITHIN 24 HOURS IS FORECAST AND WORK WILL RESUME IN THE SAME DISTURBED AREA WITHIN 24 HOURS, DAILY STABILIZATION IS NOT NECESSARY.
2. DISTURBED AREAS THAT COLLECT AND RETAIN RUNOFF, SUCH AS HOUSE FOUNDATIONS OR OPEN UTILITY TRENCHES.

PRIOR TO STABILIZATION, SNOW OR ICE MUST BE REMOVED TO A THICKNESS OF NO MORE THAN 1 INCH.

MULCH USED FOR TEMPORARY STABILIZATION MUST BE APPLIED AT DOUBLE THE STANDARD RATE, OR A MINIMUM OF 3 INCHES WITH AN 80-90% COVER.

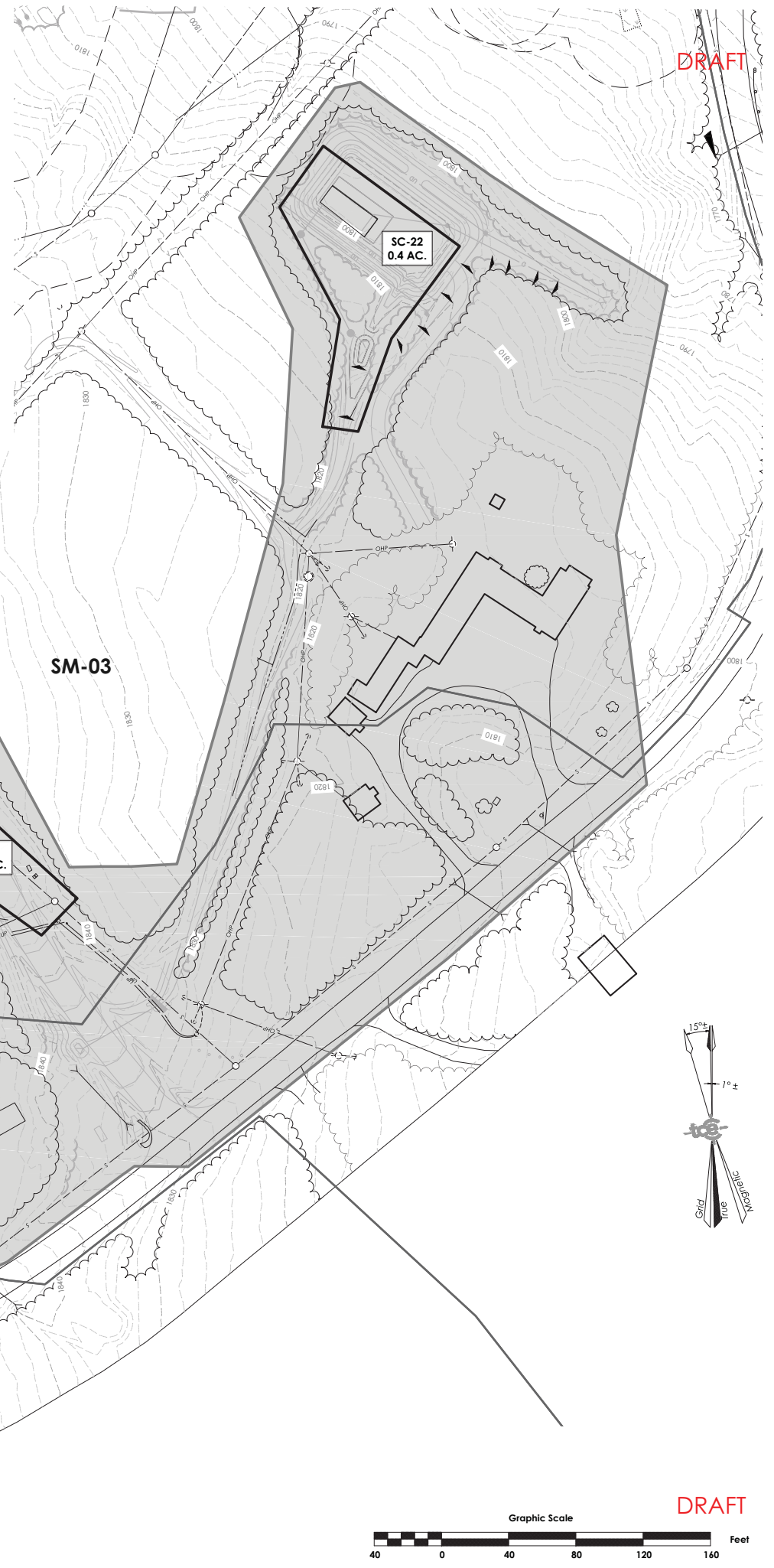
SILT FENCE AND OTHER PRACTICES REQUIRING EARTH DISTURBANCE MUST BE INSTALLED AHEAD OF FROZEN GROUND.

DRAINAGE STRUCTURES MUST BE KEPT OPEN AND FREE OF SNOW AND ICE DAMS.

A MINIMUM 25 FOOT BUFFER SHALL BE MAINTAINED FROM PERIMETER CONTROLS SUCH AS SILT FENCES.

IN AREAS OF DISTURBANCE THAT DRAIN TO A WATER BODY WITHIN 100 FEET, SILT FENCE SHALL BE REINFORCED.

ALL AREAS THAT ARE DISTURBED DURING WINTER CONSTRUCTION SHALL BE STABILIZED BY APPLYING SEED AND MULCH AT TWICE THE NORMAL RATE AND THEN COVERED WITH STRAW MATTING.



DRAFT

Revisions	No.	Description	Date	By

Use of These Drawings

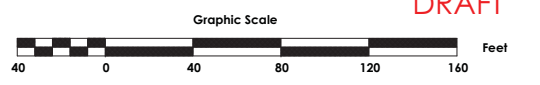
1. Unless otherwise noted, these Drawings are intended for preliminary planning, coordination with other disciplines or utilities, and/or approval from the regulatory authorities. They are not intended as construction drawings unless noted as such.
2. Only drawings specifically marked "For Construction" are intended to be used in conjunction with contract documents, specifications, owner/contractor agreements and to be fully coordinated with other disciplines, including but not limited to, the Architect, if applicable. These Drawings shall not be used for construction layout. Contact TCE for any construction surveying services or to obtain electronic data suitable for construction layout.
3. These Drawings are specific to the Project and are not transferable. As instruments of service, these drawings, and copies thereof, furnished by TCE are its exclusive property. Changes to the drawings may only be made by TCE. If errors or omissions are discovered, they shall be brought to the attention of TCE immediately.
4. By use of these drawings for construction of the Project, the Owner represents that they have reviewed, approved, and accepted the drawings and have met with all applicable parties/disciplines to insure these plans are properly coordinated with other aspects of the Project. The Owner and Architect, are responsible for any buildings shown, including an area measured a minimum five (5) feet around any building.
5. It is the User's responsibility to ensure this copy contains the most current revisions.



Project Title
Stateside Cottages
 Jay Peak Resort, Jay Vermont

Sheet Title
Overall EPSC Plan
Exhibit P1

Date: 11/22/13
 Scale: 1" = 40'
 Project Number: 3113-1
 Drawn By: NPC
 Project Engineer: NTH
 Approved By: _____



DRAFT

C5-01

Field Book: _____
 Project Reference: _____
 S:\ERI\Working Directory\Clients\Jay Peak\Jay Peak-113 - Stateside Cottages\Drawings\3113 - Waterhed EPSC.dwg, 11/15/2013 9:46:00 AM, DWG to PDF.pc3

DRAFT