

4

4T 401  
4T 401  
37.25 ft  
6°

l: 297.62 ft  
h: 77.66 ft  
l\*: 307.58 ft  
n: 26.09 %

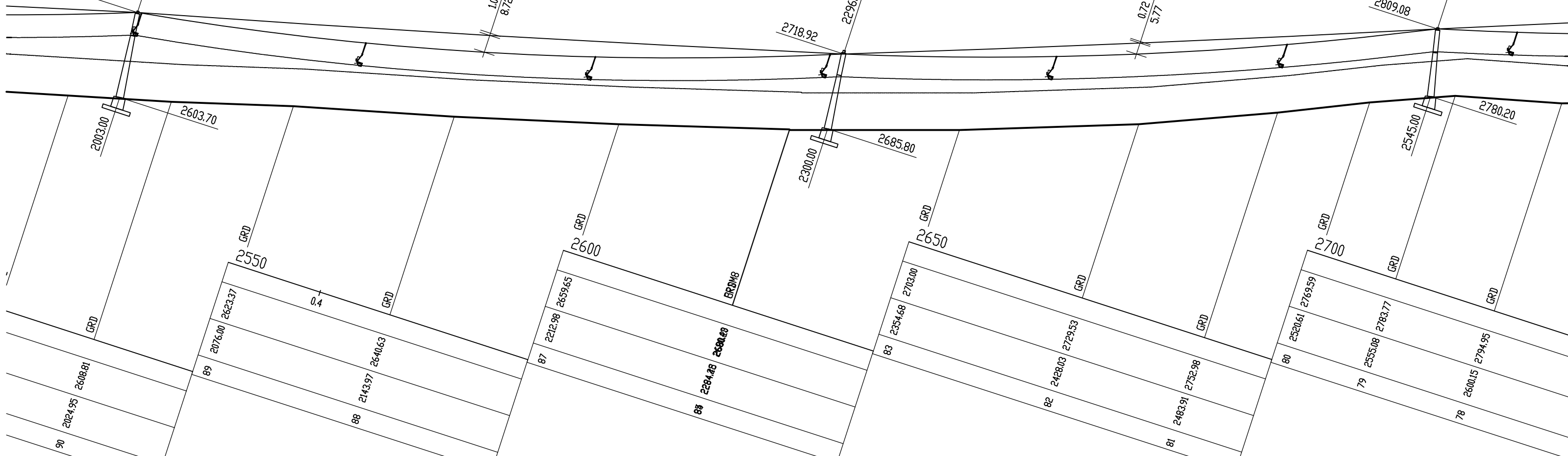
5

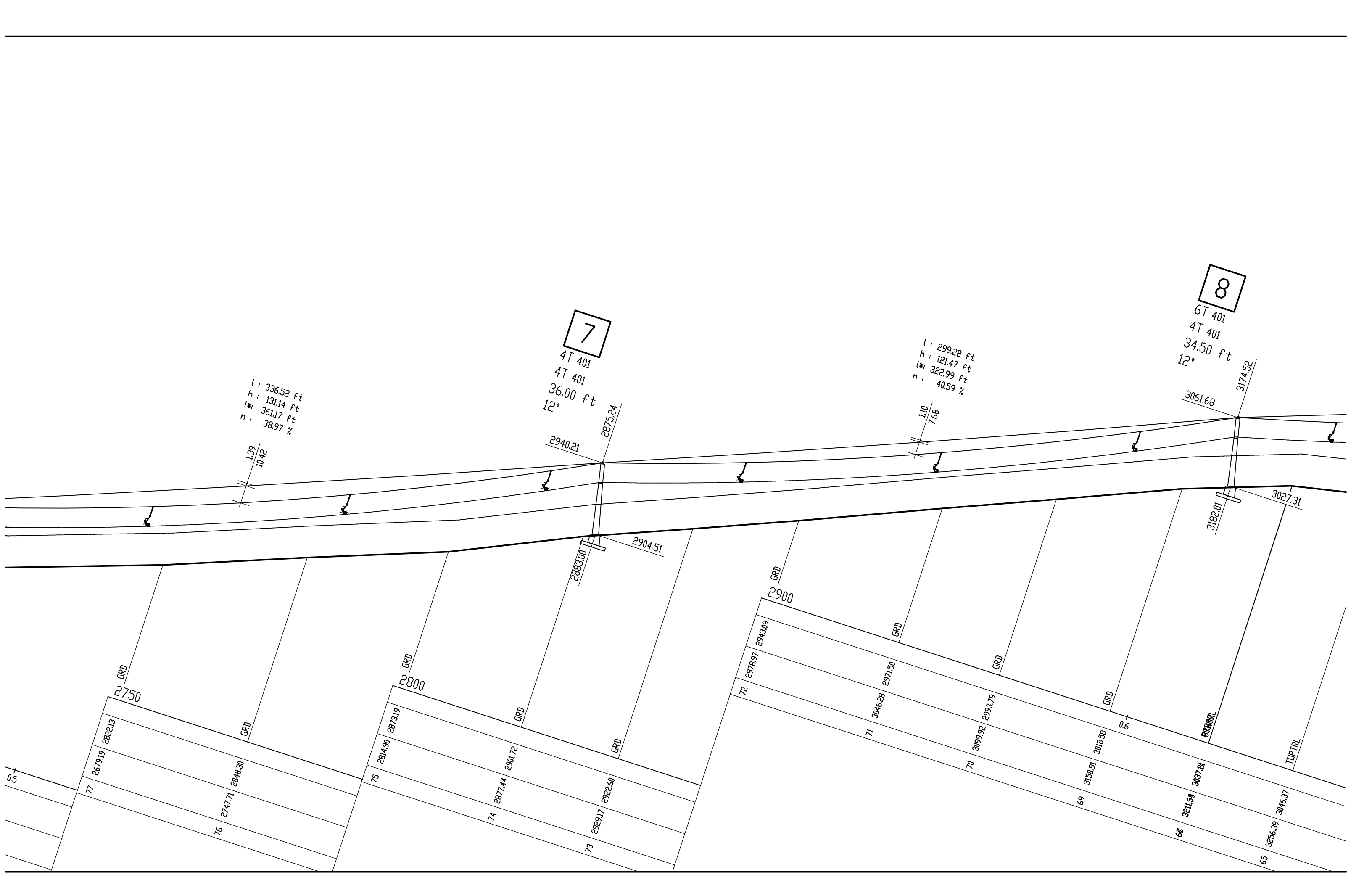
4T/4N 401  
4T/4N 401  
33.75 ft  
6°

l: 242.19 ft  
h: 90.16 ft  
l\*: 258.43 ft  
n: 37.23 %

6

4T 401  
4T 401  
29.00 ft  
12°





7

8

$l: 336.52 \text{ ft}$   
 $h: 131.14 \text{ ft}$   
 $l*: 361.17 \text{ ft}$   
 $n: 38.97 \%$

$4T \ 401$   
 $4T \ 401$   
 $36.00 \text{ ft}$   
 $12^\circ$

$l: 299.28 \text{ ft}$   
 $h: 121.47 \text{ ft}$   
 $l*: 322.99 \text{ ft}$   
 $n: 40.59 \%$

$6T \ 401$   
 $4T \ 401$   
 $34.50 \text{ ft}$   
 $12^\circ$

$\frac{1.39}{10.42}$

$\frac{1.10}{7.68}$

GRD  
2750

GRD  
2800

GRD  
2900

GRD

BRDMRL

TOPTRL

77

76

75

74

73

72

71

70

69

68

65

2679.19 2822.13

2747.71 2848.30

2814.90 2873.19

2877.44 2901.72

2929.17 2922.60

2978.97 2943.09

3046.28 2971.50

3099.92 2993.79

3158.91 3018.58

3211.93 3037.24

3256.39 3046.37

2940.21

2875.24

2883.00

2904.51

3061.68

3174.52

3182.01

3027.31

0.5

9

6T 401  
4T 401  
44.50 ft  
12°

l: 345.98 ft  
h: 123.25 ft  
w: 367.27 ft  
n: 35.62 %

l: 384.94 ft  
h: 143.06 ft  
w: 410.67 ft  
n: 37.16 %

1.76  
11.45

1.39  
8.50

3204.74

3559.46

3569.01

3160.61

GRD  
3000

GRD  
3100

GRD  
3200

64 3340.36 3080.08

63 3392.49 3099.73

62 3448.61 3123.01

61 3508.74 3141.66

60 3565.95 3158.88

59 3612.83 3176.83

58 3655.93 3194.09

57 3699.35 3211.39

56 3751.91 3234.35

55 3804.34 3255.88

52 3876.00 3276.77

GRD  
3100

GRD  
3100

GRD  
3100

GRD  
3100

GRD  
3100

Horizor  
Vertica.  
Inclined  
Average L

10

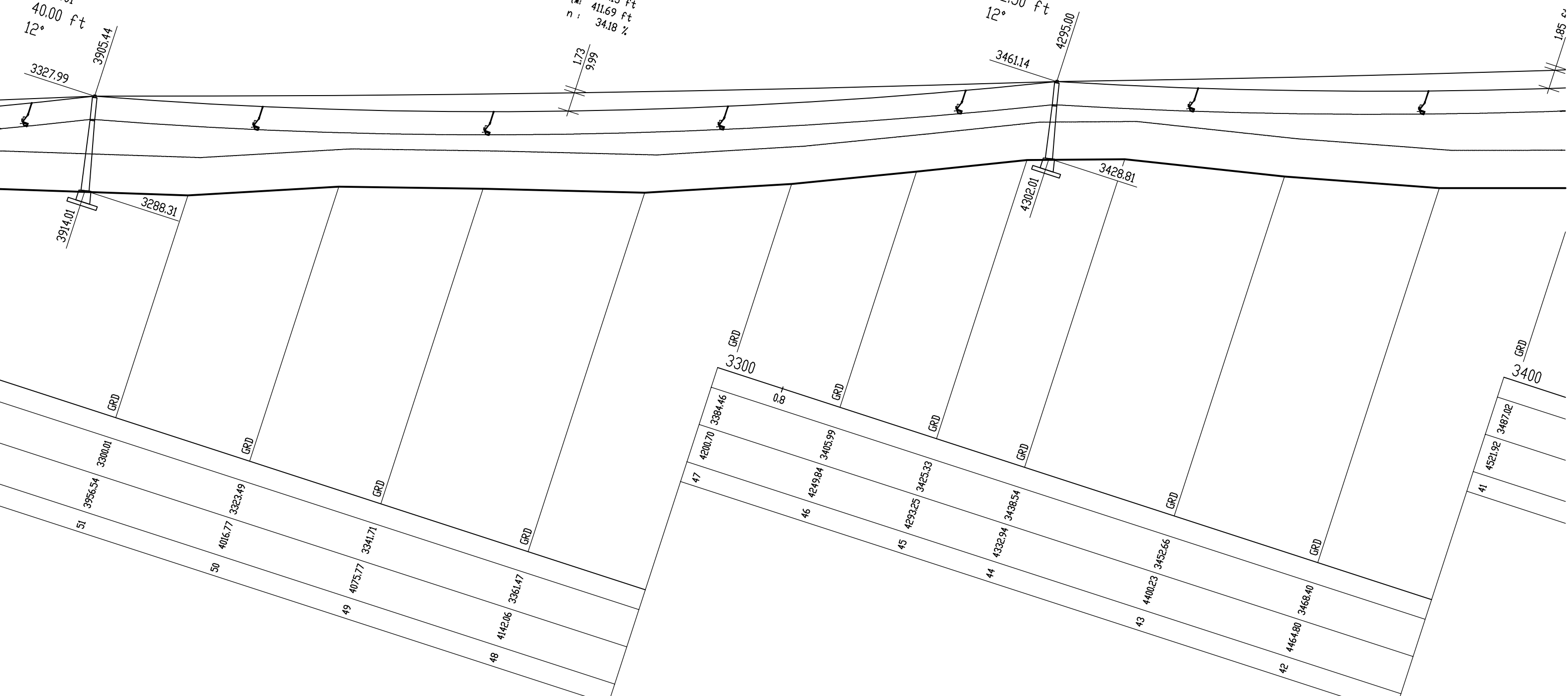
6T 401  
4T 401  
40.00 ft  
12°

l: 389.56 ft  
h: 133.15 ft  
m: 411.69 ft  
n: 34.18 %

1.73  
9.99

11

6T 401  
4T 401  
32.50 ft  
12°



Length l : 402.42 ft  
e h : 144.66 ft  
with l\* : 427.63 ft  
e n : 35.95 %  
max sag

12

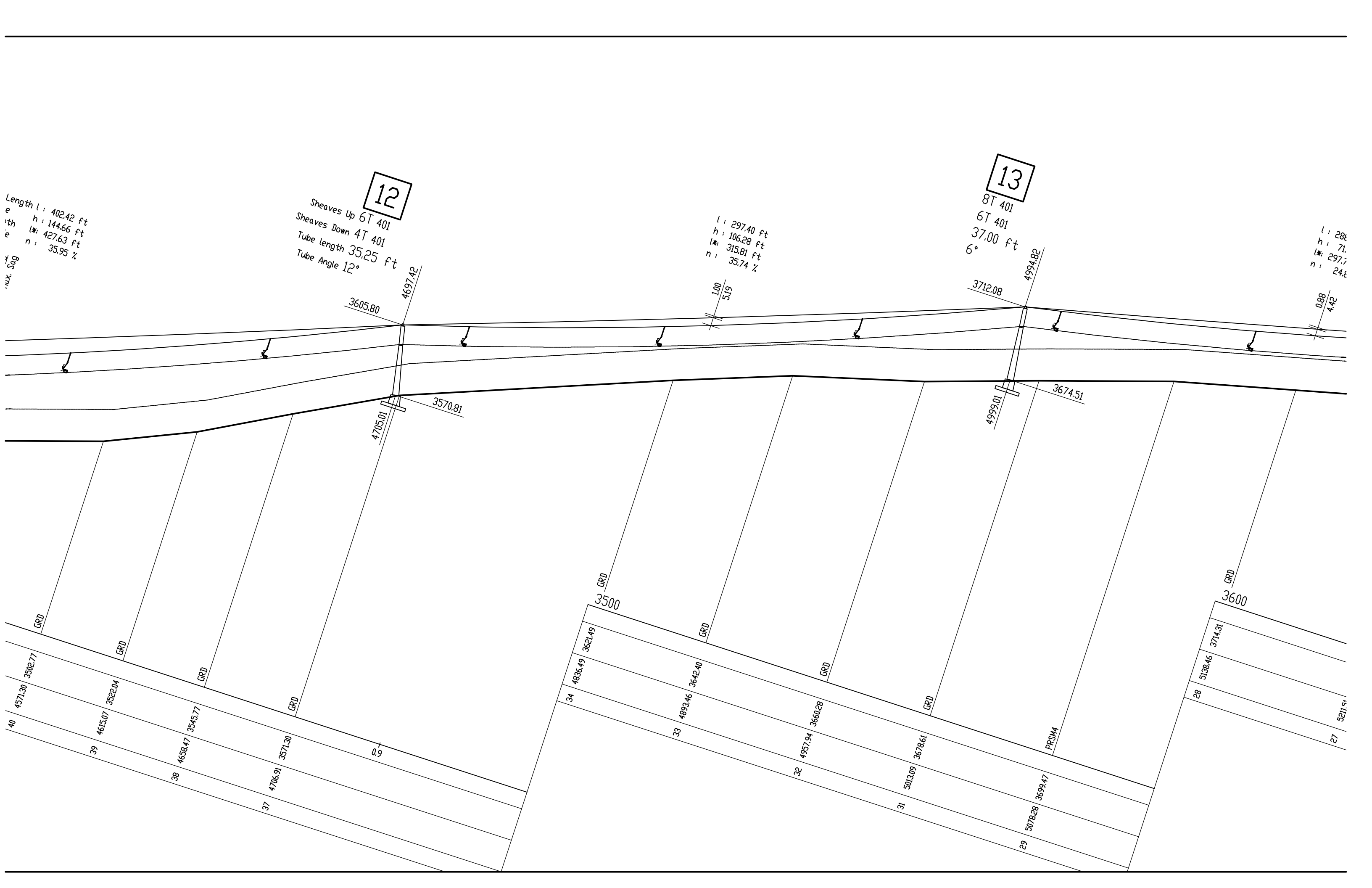
Sheaves Up 6T 401  
Sheaves Down 4T 401  
Tube length 35.25 ft  
Tube Angle 12°

13

8T 401  
6T 401  
37.00 ft  
6°

l : 297.40 ft  
h : 106.28 ft  
l\* : 315.81 ft  
n : 35.74 %

l : 288  
h : 71  
l\* : 297.7  
n : 24.8



3.94 ft  
78 ft  
3 ft  
34 %

**14**  
8T 401  
6T 401  
36.25 ft  
0°

l : 391.06 ft  
h : 75.74 ft  
w : 398.32 ft  
n : 19.37 %

**15**  
6T 401  
4T 401  
32.00 ft  
0°

l : 224.19 ft  
h : 33.54 ft  
w : 226.69 ft  
n : 14.96 %

